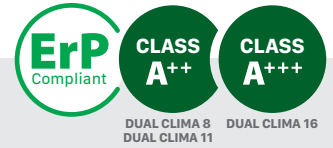


AIR SOURCE HEAT PUMPS  
**DUAL CLIMA**



COMPACT MONOBLOC HEAT PUMP  
COMPLETE INSTALLATION SOLUTION PACK (HEATING, COOLING AND DHW)  
FULLY RATED HEATING CAPACITY GUARANTEED TO -20°C  
CAN BE COMBINED WITH OTHER ENERGIES (SOLAR, GAS, OIL)  
SIZES: 8, 11 and 16 kW



The most advanced technology  
at the most reasonable price

# DUAL CLIMA

DOMUSA TEKNIK introduces in the heating and air conditioning market the **DUAL CLIMA** air source heat pump range and a complete package of solutions to optimize the energy use of the units, the storage and distribution of domestic hot water. With an excellent seasonal efficiency (**A<sup>++</sup> and A<sup>+++</sup> rating**), and ease of installation and use, the **DUAL CLIMA** range is an ideal alternative for those who choose a renewable energy source for heating and cooling their homes.

**DOMUSA**  
T E K N I K



# Savings of up to 70% of total consumption in your energy bill



## SAVINGS

Air source reduces the total energy consumption of the home by up to 70%, thanks to the use of free air energy.

This saving in consumption is maintained even when temperatures are below 0°C.



## MULTIPURPOSE

Central heating, hot water and cooling functions are available.



## ENVIRONMENTALLY FRIENDLY

Air source is a clean technology that respects the environment. It does not emit combustion gases since it does not need to burn anything to bring heat to the heating installation or domestic hot water.



## SAFETY

It is a much safer system and requires less maintenance than those that need to exchange cooling gas inside the house.



DUAL CLIMA 16



**OPERATION**

The heat obtained is exchanged in the condenser, transferring it to the heat-transferring fluid, which is responsible for supplying and/or domestic hot water.



**WIDE RANGE OF PACKS**

DOMUSA TEKNİK offers a wide range of packs that are completed with all types of buffer tanks and DHW tanks.

These tanks are made of stainless steel and have a 10 years commercial corrosion warranty.

The design of the tanks is for specific use with a heat pump, with a large heat exchange surface, and with the possibility of being installed with boilers that use other types of fuels.

The installation solutions offered with the DUAL CLIMA air source heat pump are designed to achieve efficient, durable and reliable installations.



**EFFICIENCY**

DUAL CLIMA air source heat pumps are equipped with a DC Inverter compressor which is quiet, robust, high efficiency compressor that can modulate the thermal power according to the needs of the house.

Due to the power setting, the on / off cycles are reduced, ensuring greater reliability of the system. As a result, unnecessary consumption is reduced and user comfort is improved.

The DUAL CLIMA range has a system that reduces losses caused by the accumulation of ice in the evaporator. Before the cooling liquid passes through the distributor, it flows through the bottom of the evaporator preventing ice from forming in this area.

**DUAL CLIMA's energy certification is considered as one of the best in its category**

DUAL CLIMA 8  
DUAL CLIMA 11



DUAL CLIMA 16



DUAL CLIMA 11

# Comfort at your fingertips

Configure the installation that suits your needs.





## EASE OF USE

### Reduced maintenance

MONOBLOC technology, in which the entire gas circuit is integrated into the outdoor unit, reduces the risk of cooling gas leaks, thus avoiding gas recharge operations.

In addition, by using electricity as a power source, the maintenance required in the combustion of fossil fuels is avoided, both in the combustion chamber and in the exhaust gas outlet.

### Electronic control inside the home

The control board of the DUAL CLIMA air source heat pump is installed inside the home, from which you have complete control of all the components of the system, with an easy and intuitive use.

### Quiet night operation mode

Night operation mode reduces fan noise levels during the night hours programmed in the system.

Controls for easy and intuitive use



## MONOBLOC SYSTEM

**With MONOBLOC technology only hydraulic connections are made, which simplifies the installation**

The gas/water exchanger is incorporated in the outdoor unit, thus avoiding the necessity to manipulate the cooling circuit in the installation process. The connection between the outdoor and indoor units is hydraulic, making the installation simpler and allowing a greater distance between the than if cooling gas was used as a heat-transferring fluid.



## EASE OF INSTALLATION

### 60° C flow temperature

The high flow temperatures, allows the use of the DUAL CLIMA heat pump even with radiators.

### Protection against hydraulic component frost

The electronic control of the heat pump activates the circulation pump and the compressor if necessary, in order to prevent the water from falling below freezing point.

To avoid freezing against prolonged power cuts, two solutions are offered:

- Anti frost valve that drains the water circuit in the event that water temperatures drop to freezing point.
- Corrosion Inhibitor/Anti-freeze is added to the system.

# Plug and play solutions

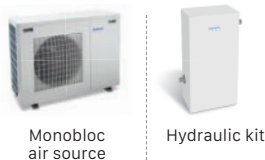
DOMUSA TEKNIK offers a wide range of packs that allow the configuration of any kind of heating, DHW or cooling installation.

Among this range of packs, you can find simple solutions such as electrical back-up kits, or more complete solutions including buffer tanks with circuit separation which allows the combination of heat pumps with back-up boilers.

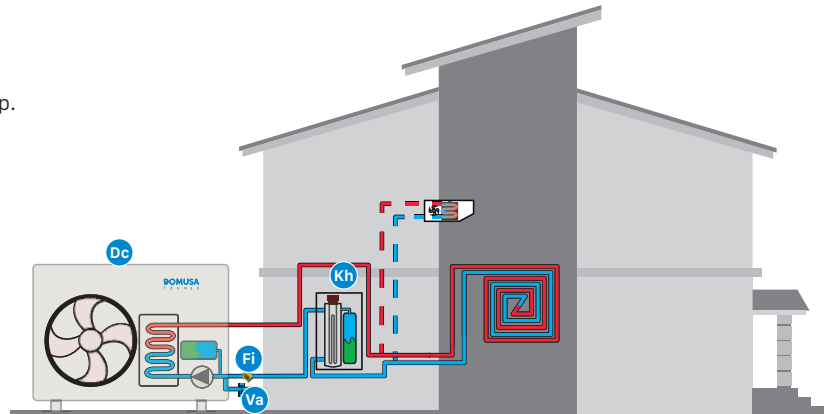
## PACK 1 DUAL CLIMA

Air source heat pump for heating with electrical back-up.

### COMPONENTS



Dc	Dual Clima heat pump	Included
Kh	Back-up hydraulic kit	Included
Fi	1" Water filter	Included
Va	Frost protection valve	Optional



Basic scheme. It does not include filters, automatic air vents, expansion vessels, shut-off valves, check or safety valves present in any installation.

MODEL	COMPOSITION	
PACK 1 DUAL CLIMA 8	Back-up hydraulic kit	1" Water filter
PACK 1 DUAL CLIMA 11		
PACK 1 DUAL CLIMA 16		

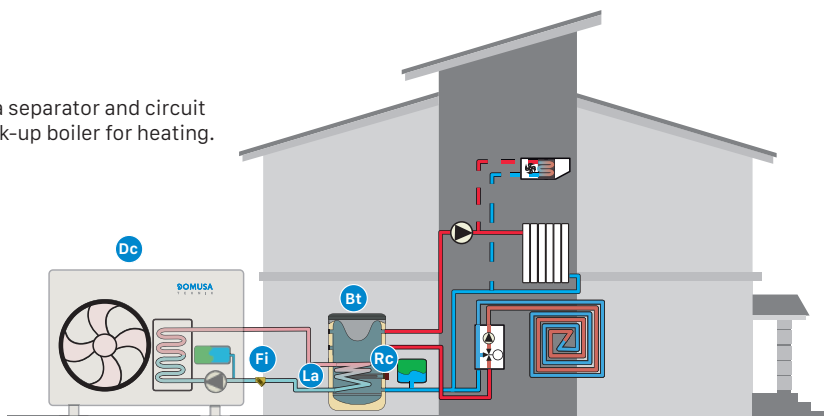
## PACK 2 DUAL CLIMA

Heating and cooling with an air source heat pump and a separator and circuit balancing buffer tank, allows the installation with a back-up boiler for heating.

### COMPONENTS



Dc	Dual Clima heat PUMP	Included
Bt	BTS tank	Included
La	Antifreeze liquid	Included
Fi	1" Water filter	Included
Rc	Electric heating element for DHW tank	Optional



Basic scheme. It does not include filters, automatic air vents, expansion vessels, shut-off valves, check or safety valves present in any installation.

MODEL	COMPOSITION		
PACK 2 DUAL CLIMA 8	BTS 100	Antifreeze liquid	1" Water filter
PACK 2 DUAL CLIMA 11			
PACK 2 DUAL CLIMA 16			



### PACK 3 DUAL CLIMA

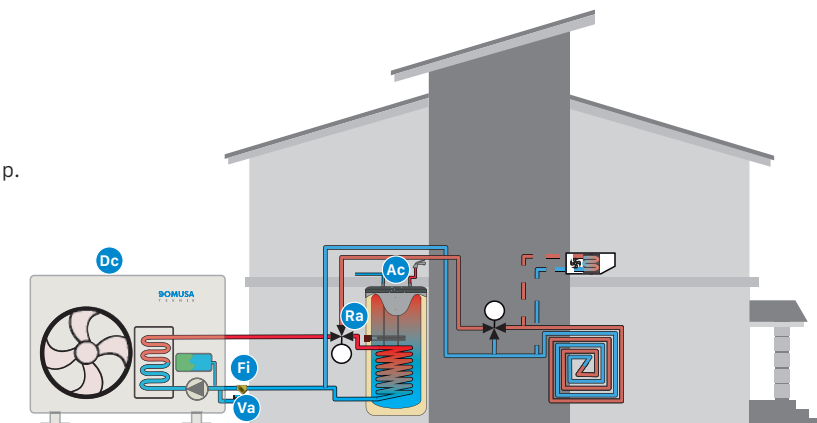
Heating, DHW and cooling with an air source heat pump.

#### COMPONENTS



Monobloc air source      SANIT HE

Dc	DUAL CLIMA heat pump	Included
Ac	SANIT HE DHW tank	Included
Fi	1" Water filter	Included
Ra	Electric heating element for DHW tank	Optional
Va	Frost protection valve	Optional



Basic scheme. It does not include filters, automatic air vents, expansion vessels, shut-off valves, check or safety valves present in any installation.

MODEL	COMPOSITION	
PACK 3 DUAL CLIMA 8/150	SANIT HE 150	1" Water filter
PACK 3 DUAL CLIMA 8/200	SANIT HE 200	
PACK 3 DUAL CLIMA 11/200		
PACK 3 DUAL CLIMA 16/200		
PACK 3 DUAL CLIMA 16/300		

### PACK 4 DUAL CLIMA

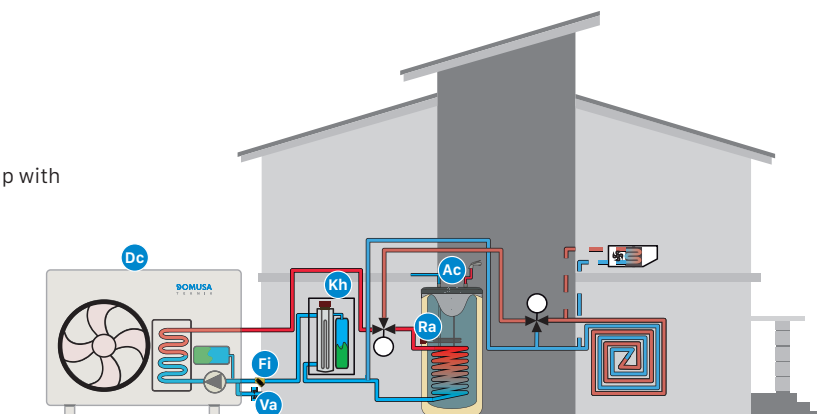
Heating, cooling and DHW with an air source heat pump with electric back-up.

#### COMPONENTS



Monobloc air source      SANIT HE      HP Hydraulic kit

Dc	DUAL CLIMA heat pump	Included
Ac	SANIT HE DHW tank	Included
Kh	HP Hydraulic kit	Included
Fi	1" Water filter	Included
Va	Frost protection valve	Optional
Ra	Electric heating element for DHW tank	Optional



Basic scheme. It does not include filters, automatic air vents, expansion vessels, shut-off valves, check or safety valves present in any installation.

MODEL	COMPOSITION		
PACK 4 DUAL CLIMA 8/150	SANIT HE 150	1" Water filter	HP Hydraulic kit
PACK 4 DUAL CLIMA 8/200	SANIT HE 200		
PACK 4 DUAL CLIMA 11/200			
PACK 4 DUAL CLIMA 16/200			
PACK 4 DUAL CLIMA 16/300			

### PACK 5 DUAL CLIMA

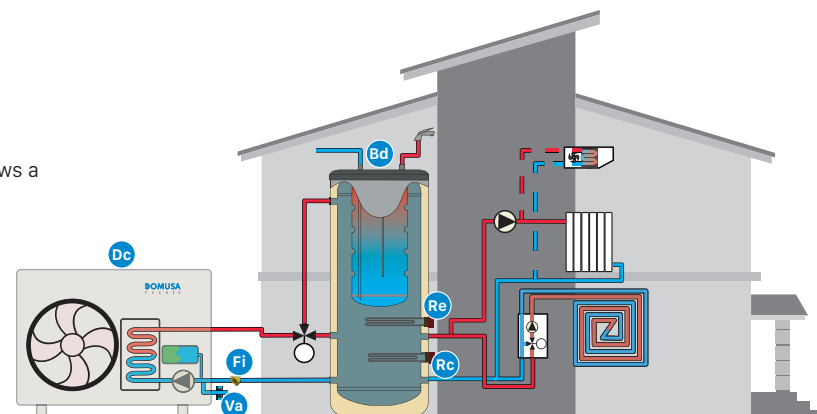
Heating and DHW with an air source heat pump. It allows a combination of a back-up boiler.

#### COMPONENTS



Monobloc air source      BT DUO HE

Dc	DUAL CLIMA heat pump	Included
Bd	BT DUO HE buffer tank	Included
Fi	1" Water filter	Included
Ra	Electric heating element for DHW tank	Optional
Rc	Electric heating element for heating	Optional
Va	Frost protection valve	Optional



Basic scheme. It does not include filters, automatic air vents, expansion vessels, shut-off valves, check or safety valves present in any installation.

MODEL	COMPOSITION	
PACK 5 DUAL CLIMA 8	BT DUO HE buffer tank 180/60	1" Water filter
PACK 5 DUAL CLIMA 11		
PACK 5 DUAL CLIMA 16		

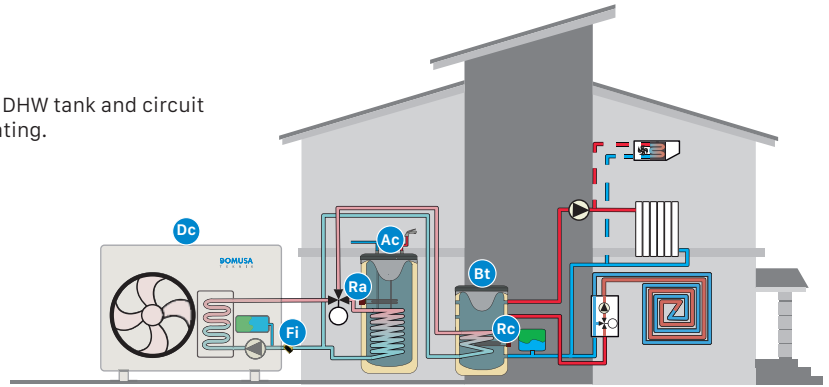
### PACK 6 DUAL CLIMA

Heating, cooling and DHW with an air source heat pump, DHW tank and circuit balancing unit. Allows the use of a back-up boiler for heating.

**COMPONENTS**



Dc	DUAL CLIMA heat pump	Included
Bt	BTS tank	Included
Ac	SANIT HE DHW tank	Included
La	Antifreeze liquid	Included
Fi	1" Water filter	Included
Ra	Electric heating element for DMW tank	Optional
Rc	Electric heating element for heating	Optional



Basic scheme. It does not include filters, automatic air vents, expansion vessels, shut-off valves, check or safety valves present in any installation.

MODEL	COMPOSITION			
PACK 6 DUAL CLIMA 8/100	BTS tank 100	SANIT HE 150		
PACK 6 DUAL CLIMA 8/200	BTS tank 100		1" Water filter	Antifreeze liquid
PACK 6 DUAL CLIMA 11/200	BTS tank 100	SANIT HE 200		
PACK 6 DUAL CLIMA 16/200	BTS tank 150			
PACK 6 DUAL CLIMA 16/300	BTS tank 150	SANIT HE 300		

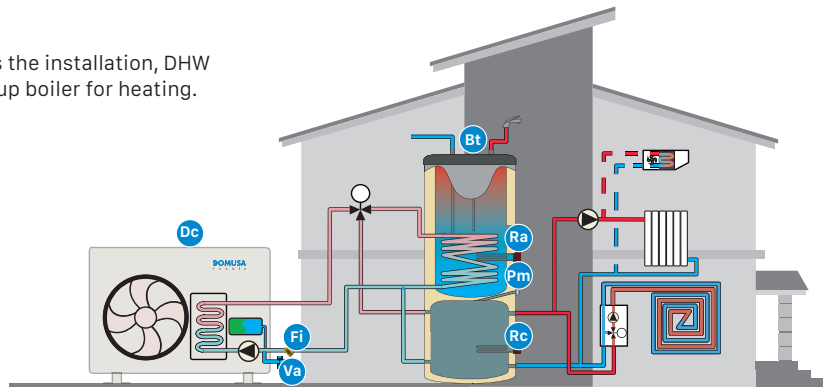
### PACK 7 DUAL CLIMA

Air source heat pump with a triple service tank: balances the installation, DHW and heating, DHW and cooling. Allows the use of a back-up boiler for heating.

**COMPONENTS**



Dc	DUAL CLIMA heat pump	Included
Bt	BTS tank	Included
Pm	Manual air vent	Included
Fi	1" Water filter	Included
Ra	Electric heating element for DMW tank	Optional
Rc	Electric heating element for heating	Optional
Va	Frost protection valve	Optional



Basic scheme. It does not include filters, automatic air vents, expansion vessels, shut-off valves, check or safety valves present in any installation.

MODEL	COMPOSITION		
PACK 7 DUAL CLIMA 8	BT TRIO 200/50		1" Water filter
PACK 7 DUAL CLIMA 11	BT TRIO 200/80		
PACK 7 DUAL CLIMA 16	BT TRIO 200/80		

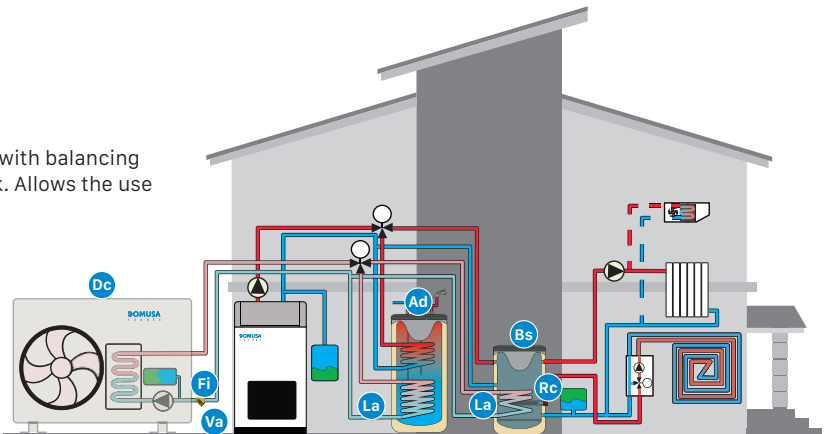
### PACK 8 DUAL CLIMA

Heating, cooling and DHW with an Air source heat pump with balancing circuit separation buffer and double exchange DHW tank. Allows the use of a back-up boiler.

**COMPONENTS**



Dc	DUAL CLIMA heat pump	Included
Ad	SANIT HE DHW tank DS	Included
Bs	BTS tank	Included
La	Antifreeze liquid	Included
Fi	1" Water filter	Included
Rc	Electric heating element for DHW tank	Optional



Basic scheme. It does not include filters, automatic air vents, expansion vessels, shut-off valves, check or safety valves present in any installation.

MODEL	COMPOSITION			
PACK 8 DUAL CLIMA 8/200		BTS 100		1" Water filter
PACK 8 DUAL CLIMA 11/200	SANIT HE 200 DS			
PACK 8 DUAL CLIMA 16/200		BTS 150		
PACK 8 DUAL CLIMA 16/300	SANIT HE 300 DS			

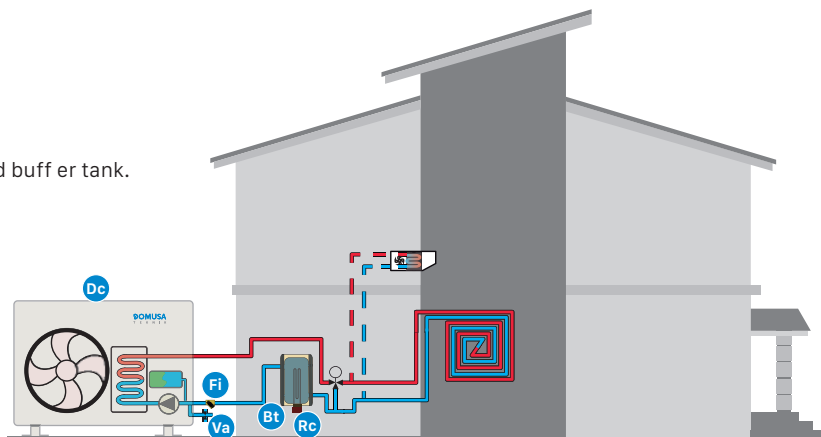
### PACK 9 DUAL CLIMA

Heating and cooling with an Air Source Heat Pump and buff er tank.

**COMPONENTS**



Dc	DUAL CLIMA heat pump	Included
Bt	BT50 tank	Included
Fi	1" Water filter	Included
Va	Frost protection valve	Optional
Rc	Electric heating element for DHW tank	Optional



Basic scheme. It does not include filters, automatic air vents, expansion vessels, shut-off valves, check or safety valves present in any installation.

MODEL	COMPOSITION	
PACK 9 DUAL CLIMA 8		
PACK 9 DUAL CLIMA 11	BT 50	1" water filter
PACK 9 DUAL CLIMA 16		

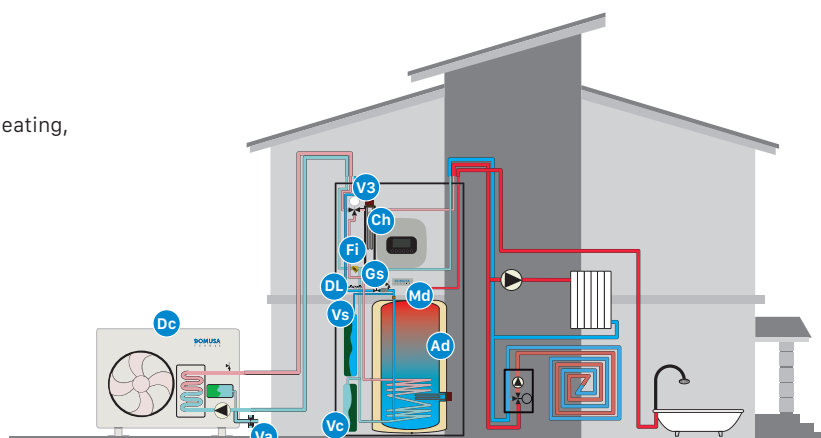
### PACK 10 DUAL CLIMA

Air to water heat pump with pre plumbed module for heating, DHW and cooling.

**COMPONENTS**



Dc	DUAL CLIMA heat pump	Included
Gs	DHW inlet safety group	Included
Md	Dielectric sleeves	Included
Vs	DHW expansion vessel	Included
Ad	Stainless steel DHW cylinder	Included
DL	Filling loop	Included
V3	Three way valve	Included
Fi	1" Water filter	Included
Ch	Back-up drum	Included
Vc	Heating circuit expansion vessel	Optional
Va	Frost protection valve	Optional
	Back up hydraulic pump kit	Optional



Basic scheme. It does not include filters, automatic air vents, expansion vessels, shut-off valves, check or safety valves present in any installation.

MODEL	COMPOSITION	
PACK 10 DUAL CLIMA 8/150	FUSION HE 150	DUAL CLIMA 8
PACK 10 DUAL CLIMA 11/150	FUSION HE 150	DUAL CLIMA 11
PACK 10 DUAL CLIMA 8/200	FUSION HE 200	DUAL CLIMA 8
PACK 10 DUAL CLIMA 11/200	FUSION HE 200	DUAL CLIMA 11
PACK 10 DUAL CLIMA 16/200	FUSION HE 200	DUAL CLIMA 16
PACK 10 DUAL CLIMA 11/300	FUSION HE 300	DUAL CLIMA 11
PACK 10 DUAL CLIMA 16/300	FUSION HE 300	DUAL CLIMA 16

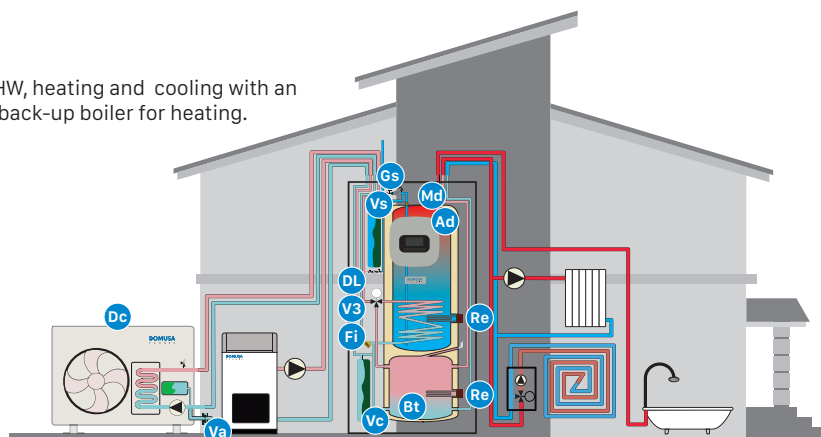
### PACK 11 DUAL CLIMA

Air to water heat pump with pre plumbed module for DHW, heating and cooling with an integrated buffer tank. Allows the combination with a back-up boiler for heating.

**COMPONENTS**



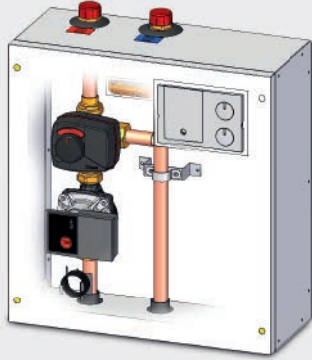
Dc	DUAL CLIMA heat pump	Included
Gs	DHW inlet safety group	Included
Md	Dielectric sleeves	Included
Vs	DHW expansion vessel	Included
Ad	Stainless steel DHW cylinder	Included
DL	Filling loop	Included
V3	Three way valve	Included
Fi	1" Water filter	Included
Bt	Buffer tank	Included
Vc	Heating circuit expansion vessel	Included
Va	Frost protection valve	Optional
Re	Back-up electric element kit	Optional
	Back up hydraulic pump kit	Optional



Basic scheme. It does not include filters, automatic air vents, expansion vessels, shut-off valves, check or safety valves present in any installation.

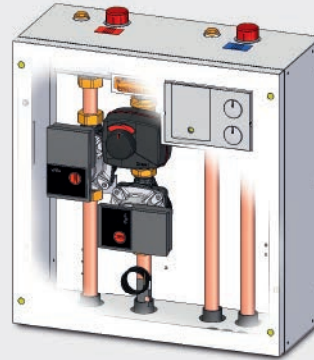
MODEL	COMPOSITION	
PACK 11 DUAL CLIMA 8/50	FUSION TRIO 200/50	DUAL CLIMA 8
PACK 11 DUAL CLIMA 11/50	FUSION TRIO 200/50	DUAL CLIMA 11
PACK 11 DUAL CLIMA 16/50	FUSION TRIO 200/50	DUAL CLIMA 16
PACK 11 DUAL CLIMA 11/80	FUSION TRIO 200/80	DUAL CLIMA 11
PACK 11 DUAL CLIMA 16/80	FUSION TRIO 200/80	DUAL CLIMA 16

# Hydraulic accessories for heat pumps



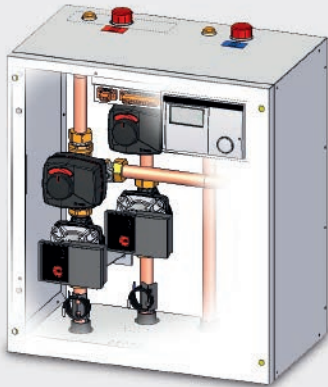
**Kit BT M**

- Mixed circuit
- Weather compensation system



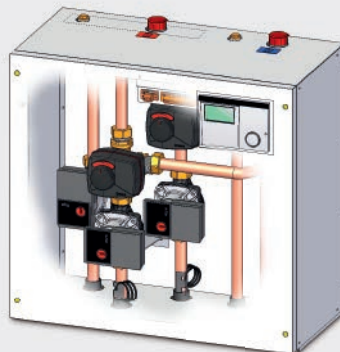
**Kit BT DM**

- Mixed circuit
- Direct circuit
- Weather compensation system



**Kit BT 2M**

- Mixed circuit
- Mixed circuit
- Weather compensation system



**Kit BT 2MS**

- Mixed circuit
- Direct circuit
- DHW
- Weather compensation system

## HYDRAULIC MODULE FOR HEAT PUMP

# HP HYDRAULIC KIT

INTEGRATED EXPANSION VESSEL

2,5 kW BACK UP ELECTRIC HEATING ELEMENT

### SPECIFICATIONS

MODEL	ELECTRIC HEATING ELEMENT POWER kW	DIMENSIONS mm		
		HEIGHT	WIDTH	DEPTH
HP HYDRAULIC KIT	2,5	710	365	230





PRE PLUMBED HYDRAULIC MODULE

# FUSION HE

INTEGRATED HYDRAULIC MODULE

STAINLESS STEEL DHW CYLINDER

FULLY EQUIPPED



## SPECIFICATIONS

MODEL	DHW VOLUME L	APPLICATION	DIMENSIONS			EXCHANGE SURFACE m <sup>2</sup>	ENERGY EFFICIENCY CLASS
			WIDTH	HEIGHT	DEPTH		
FUSION HE 150	150	Heating, cooling and DHW	600	1,500	600	2.25	C
FUSION HE 200	200		600	1,900	600	2.50	
FUSION HE 300	300		600	1,870	650	3.10	

### OPTIONS integrable within the module)

Fusion HE heating circuit expansion vessel kit

Fusion HE back-up pump kit

Fusion 1,5 kw electric heating element

Fusion 2,5 kw electric heating element

Fusion 3,5 kw electric heating element

### EQUIPMENT

DHW inlet safety group	Stainless steel DHW cylinder	1" Water filter
Dielectric sleeves	Filling loop	Back up drum
DHW expansion vessel	Three way valve	



PRE PLUMBED HYDRAULIC MODULE

# FUSION TRIO

INTEGRATED BUFFER TANK

STAINLESS STEEL DHW CYLINDER

FULLY EQUIPPED



## SPECIFICATIONS

MODEL	DHW VOLUME L	PRIMARY VOLUME L	APPLICATION	DIMENSIONS			EXCHANGE SURFACE m <sup>2</sup>	ENERGY EFFICIENCY CLASS
				WIDTH	HEIGHT	DEPTH		
FUSION TRIO 200/50	200	50	Heating, cooling and DHW	600	1,910	650	2.25	C
FUSION TRIO 200/80	200	80		600	1,960	650	2.50	

### OPTIONS

Fusion 1,5 kw electric heating element

Fusion 2,5 kw electric heating element

Fusion 2,5 kw electric heating element

### EQUIPMENT

DHW inlet safety group	Stainless steel DHW cylinder	1" Water filter
Dielectric sleeves	Filling loop	Buffer tank
DHW expansion vessel	Three way valve	Heating expansion vessel

BUFFER TANK

# BT 50



PRIMARY CIRCUIT TANK  
FOR HEATING AND COOLING  
CAPACITY: 50 L

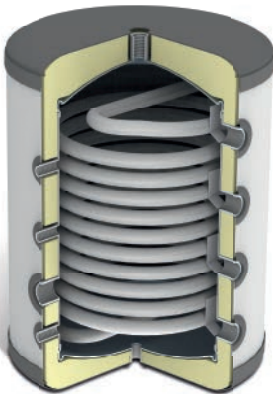


SPECIFICATIONS

MODEL	DIMENSIONS mm		ENERGY EFFICIENCY CLASS
	HEIGHT	DIAMETER	
BT 50	586	530	C

BUFFER TANK WITH SEPARATOR

# BTS 100-150



PRIMARY CIRCUIT TANK  
FOR HEATING AND COOLING  
CAPACITY: 100 AND 150 L

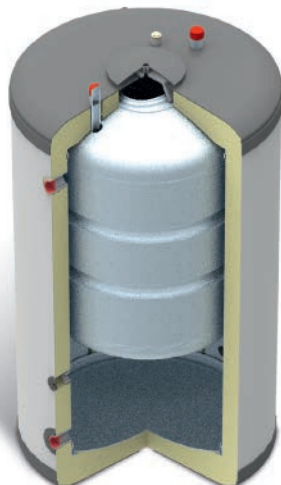


SPECIFICATIONS

MODEL	DIMENSIONS mm		ENERGY EFFICIENCY CLASS	EXCHANGE SURFACE m <sup>2</sup>
	HEIGHT	DIAMETER		
BTS 100	852	581	C	1.9
BTS 150	1,132	581		2.4

BUFFER TANK

# BT DUO HE



PRIMARY CIRCUIT AND DHW ACCUMULATION  
FOR HEATING  
CAPACITY: 180/60 L



SPECIFICATIONS

MODEL*	PRIMARY VOLUME L	DHW VOLUME L	APPLICATION	DIMENSIONS mm		ENERGY EFFICIENCY CLASS
				DIMENSIONS	HEIGHT	
BT DUO HE 180/60	60	180	Heating and DHW	581	1,740	C



BUFFER TANK

# BT TRIO

PRIMARY AND DHW ACCUMULATION

FOR HEATING AND COOLING  
WITH STAINLESS STEEL TANK

CAPACITIES: 200/50 - 200/80 L



SPECIFICATIONS

MODEL*	PRIMARY VOLUME L	DHW VOLUME L	APPLICATION	DIMENSIONS mm		ENERGY EFFICIENCY CLASS	EXCHANGE SURFACE m <sup>2</sup>
				DIMENSIONS	HEIGHT		
BT TRIO 200/50	50	200	Heating, cooling and DHW	608	1,718	C	2.5
BT TRIO 200/80	80	200		608	1,790		2.5

DHW CYLINDERS FOR HEAT PUMPS

# SANIT HE

STAINLESS STEEL CYLINDER

SINGLE COIL

CAPACITIES: 150 - 200 - 300 L



SPECIFICATIONS

MODEL	VOLUME L	APPLICATION	DIMENSIONS mm		ENERGY EFFICIENCY CLASS	EXCHANGE SURFACE m <sup>2</sup>
			DIMENSIONS	HEIGHT		
SANIT HE 150	150	DHW	581	1,227	B	2.25
SANIT HE 200	200		581	1,563	B	2.5
SANIT HE 300	300		581	1,790	C	3.1



DHW CYLINDERS FOR HEAT PUMPS

# SANIT HE DS

STAINLESS STEEL TANK

TWIN COIL

CAPACITIES: 200 - 300 L



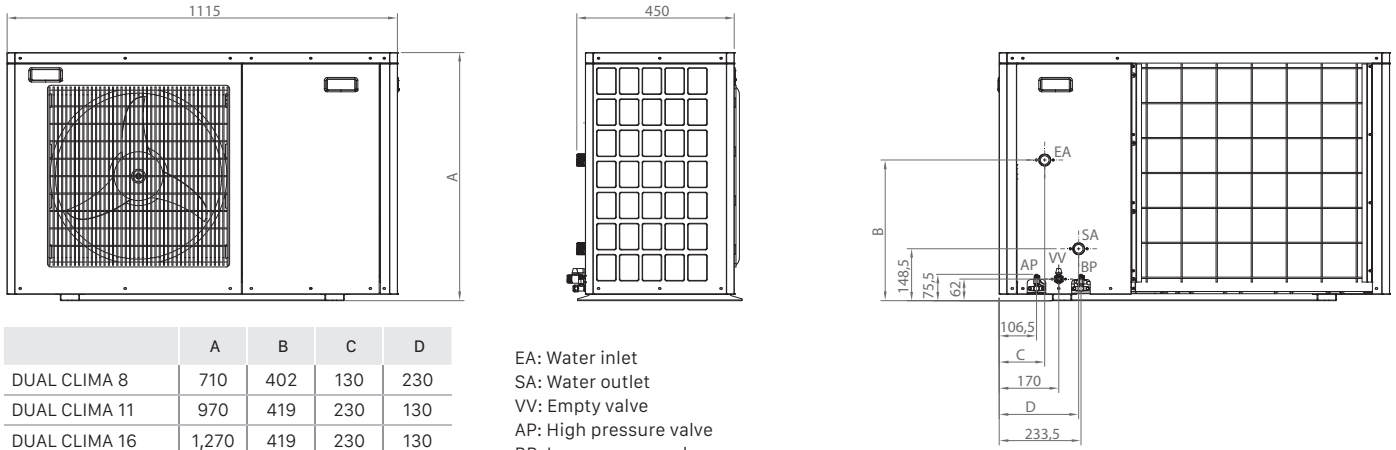
SPECIFICATIONS

MODEL	VOLUME L	APPLICATION	DIMENSIONS mm		ENERGY EFFICIENCY CLASS	EXCHANGE SURFACE m <sup>2</sup>
			DIMENSIONS	HEIGHT		
SANIT HE 200 DS	200	DHW double exchange	581	1,563	B	2.5 + 0,6
SANIT HE 300 DS	300		608	1,790	C	3.1 + 0,6



# TECHNICAL CHARACTERISTICS

## DIMENSIONS



	A	B	C	D
DUAL CLIMA 8	710	402	130	230
DUAL CLIMA 11	970	419	230	130
DUAL CLIMA 16	1,270	419	230	130

MAIN CHARACTERISTICS		DUAL CLIMA 8	DUAL CLIMA 11	DUAL CLIMA 16
$\eta_s$ Seasonal efficiency	%	163	170	176
SCOP		4.16	4.32	4.48
SEER		4.10	3.40	3.90
COP (T. aire 7°C, T. agua 30/35-EN14511)		4.59	4.24	4.50
Energy efficiency class		<b>A++</b>		<b>A+++</b>
Heating output (Air T. 7°C, Water T. 30/35-EN14511)	kW	7.80	10.30	15.50
Cooling output (Air T. 7°C, Water T. 30/35-EN14511)	kW	8.40	9.45	15.70
Ingress protection		IPX 4		
Heat Pump Type		Air to Water, Inverter, Monobloc		
Use		Heating, Cooling and DHW		
Cooling		R410A		
Load	kg	2.30	3.30	3.90
Voltage	V	230V/50Hz		
Maximum absorbed cooling power	kW	1.70	2.50	3.44
Maximum absorbed heating power	kW	2.25	3.05	4.40
Sound pressure level (LP)	db(A)	46	49	52
Max. flow temperature	°C	60		
Working temperature range	°C	-20/46		
Nominal working flow	m³/h	1.50	1.85	2.80
Weight	kg	90	125	150

## OPTIONS

- 1" water filter
- HP hydraulic kit
- 1,5 kW electric heating element
- 2,5 kW electric heating element
- 3,5 kW electric heating element
- Antifreeze liquid (5L)
- Room sensor
- Frost protection valve
- MYDOMO WiFi remote control
- Fusion HE heating circuit expansion vessel kit
- Fusion HE back-up pump kit
- Fusion 1,5 kw electric heating element
- Fusion 2,5 kw electric heating element
- Fusion 3,5 kw electric heating element



## EQUIPMENT

- DC Inverter air source heat pump
- High efficiency pump
- Heating circuit expansion vessel
- Control unit
- Flow limiter
- Water pressure gauge



W: [www.optimum.uk.com](http://www.optimum.uk.com)  
E: [info@optimum.uk.com](mailto:info@optimum.uk.com)  
T: 0800 009 6329

